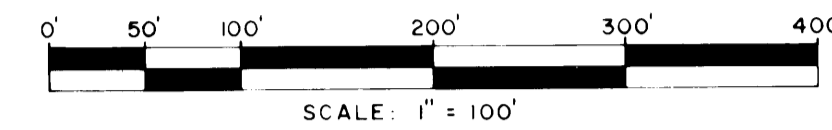


A PLAT OF CORAL LAKES

BEING A SUBDIVISION OF A PORTION OF HANSON GRANT; A PLAT RECORDED
IN PLAT BOOK I, PAGE II OF PALM BEACH (NOW MARTIN) COUNTY, FLORIDA

MARCH, 1979

SHEET 2 OF 3

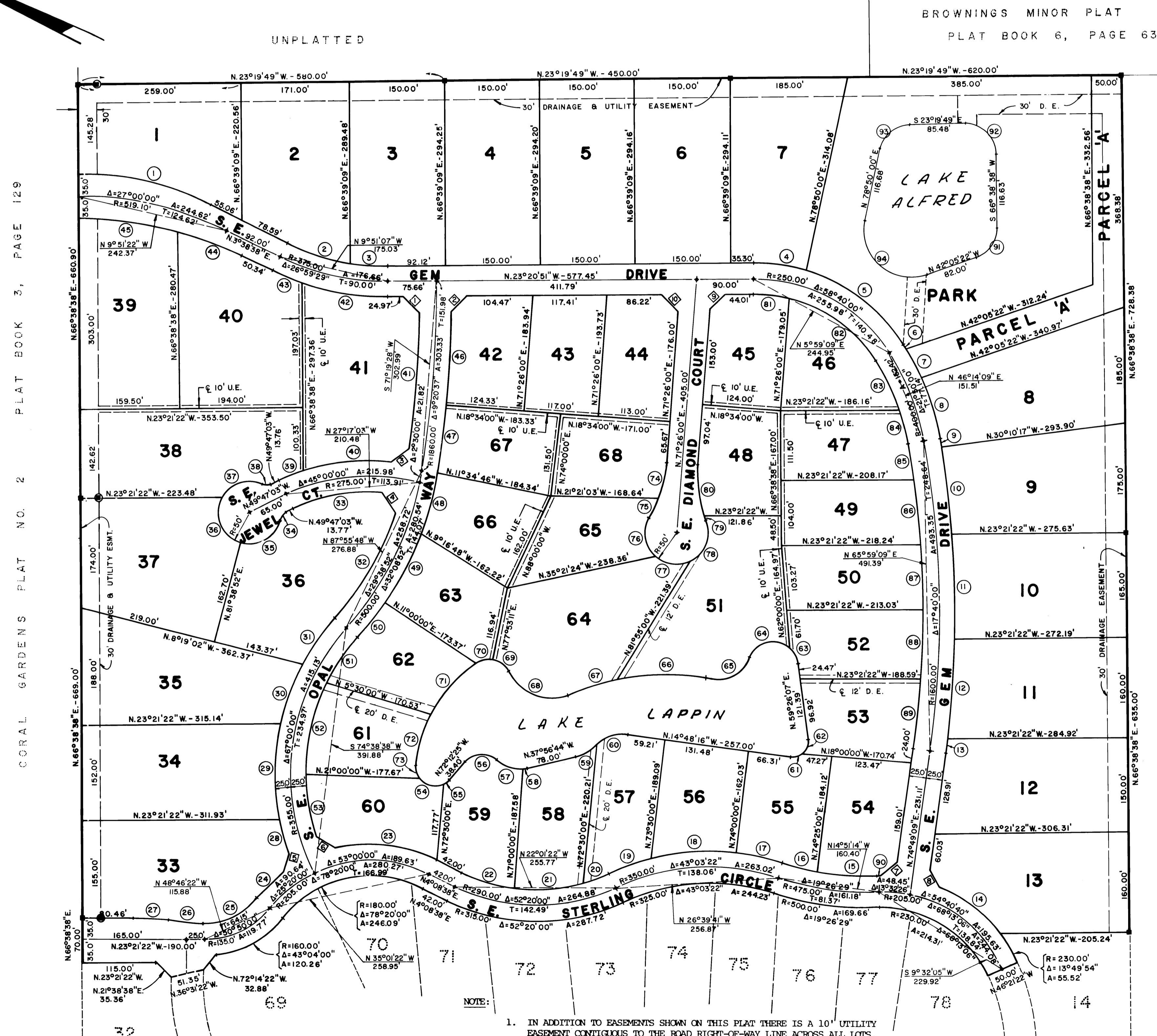


CHORD TABLE

BEARING	DISTANCE
1. N 22°26'37" E	35.84'
2. N 67°35'51" W	34.89'
3. N 60°00'42" W	35.35'
4. N 34°00'39" E	38.72'
5. N 84°00'47" E	29.68'
6. N 06°21'12" E	34.20'
7. N 64°08'43" W	32.83'
8. N 37°10'58" E	30.53'
9. N 65°57'26" W	33.85'
10. N 24°02'35" E	36.80'

CURVE TABLE

R	A	A
1. 462.36'	27°00'00"	217.88'
2. 350.00'	17°28'24"	106.74'
3. 350.00'	09°31'05"	58.14'
4. 275.00'	17°39'16"	84.74'
5. 275.00'	41°00'44"	196.85'
6. 425.00'	01°05'27"	8.09'
7. 425.00'	06°48'45"	50.53'
8. 425.00'	13°55'48"	103.33'
9. 1625.00'	00°24'42"	11.67'
10. 1625.00'	04°58'30"	141.10'
11. 1625.00'	05°49'17"	165.11'
12. 1625.00'	05°39'42"	160.57'
13. 1625.00'	00°47'49"	22.61'
14. 230.00'	30°15'58"	121.50'
15. 450.00'	12°05'45"	95.00'
16. 450.00'	07°20'44"	57.69'
17. 375.00'	11°20'00"	74.18'
18. 375.00'	20°17'00"	132.75'
19. 375.00'	11°26'23"	74.87'
20. 265.00'	08°53'40"	41.14'
21. 265.00'	23°41'20"	109.56'
22. 265.00'	19°45'00"	91.35'
23. 230.00'	40°56'51"	164.37'
24. 230.00'	14°36'50"	58.66'
25. 110.00'	50°50'00"	97.59'
26. 302.50'	10°25'54"	55.08'
27. 302.50'	10°25'54"	55.08'
28. 380.00'	08°42'53"	57.80'
29. 380.00'	23°04'45"	153.07'
30. 380.00'	15°09'17"	100.51'
31. 380.00'	13°35'38"	90.16'
32. 475.00'	23°23'25"	193.91'
33. 250.00'	33°03'08"	144.22'
34. 15.00'	52°01'13"	13.62'
35. 50.00'	9°32'07"	81.55'
36. 50.00'	10°52'52"	92.06'
37. 50.00'	85°05'26"	74.26'
38. 15.00'	52°01'13"	13.62'
39. 300.00'	08°14'06"	43.12'
40. 300.00'	26°31'59"	138.93'
41. 1835.00'	06°45'27"	216.42'
42. 400.00'	19°37'20"	136.99'
43. 400.00'	07°22'09"	51.45'
44. 575.86'	10°55'12"	109.75'
45. 575.86'	16°04'48"	161.61'
90. 230.00'	01°27'54"	5.88'
91. 50.00'	71°16'01"	67.19'
92. 50.00'	89°58'27"	78.52'
93. 50.00'	77°50'11"	67.92'
94. 75.00'	120°55'22"	158.29'



- NOTE:
1. IN ADDITION TO EASEMENTS SHOWN ON THIS PLAT THERE IS A 10' UTILITY EASEMENT CONTIGUOUS TO THE ROAD RIGHT-OF-WAY LINE ACROSS ALL LOTS.
 2. THERE SHALL BE NO LOT SPLITS EXCEPT TO CREATE LARGER LOTS.

- SURVEYOR'S NOTES**
- MONUMENTATION:
- = DENOTES PERMANENT REFERENCE MONUMENT (P.R.M.)
 - = DENOTES PERMANENT CONTROL POINT (P.C.P.)
 - = DENOTES 30' OFFSET TO PERMANENT REFERENCE MONUMENT
 - U.E. = DENOTES UTILITY EASEMENT
 - D.E. = DENOTES DRAINAGE EASEMENT

CURVE TABLE

R	A	A
46. 1885.00'	04°31'39"	148.95'
47. 1885.00'	03°18'58"	109.10'
48. 525.00'	10°54'49"	100.00'
49. 525.00'	13°29'12"	123.58'
50. 525.00'	07°44'51"	70.99'
51. 330.00'	14°55'12"	85.93'
52. 330.00'	26°21'04"	151.77'
53. 330.00'	17°21'45"	100.00'
54. 30.00'	83°36'44"	43.78'
55. 30.00'	22°34'08"	11.82'
56. 35.00'	94°13'50"	57.56'
57. 50.00'	50°45'28"	44.30'
58. 50.00'	09°12'41"	08.04'
59. 75.00'	29°32'41"	38.67'
60. 60.00'	52°41'09"	55.17'
61. 25.00'	48°01'30"	20.96'
62. 25.00'	57°44'07"	25.19'
63. 40.00'	39°35'02"	27.64'
64. 40.00'	108°50'23"	75.99'
65. 60.00'	77°36'49"	81.28'
66. 340.00'	24°01'00"	142.52'
67. 340.00'	13°29'20"	80.04'
68. 70.00'	93°37'38"	114.39'
69. 35.00'	56°51'36"	34.73'
70. 35.00'	45°47'47"	27.98'
71. 225.00'	28°00'41"	110.00'
72. 225.00'	21°59'20"	86.35'
73. 30.00'	38°06'58"	19.96'
74. 200.00'	16°42'36"	58.33'
75. 200.00'	09°07'55"	31.88'
76. 50.00'	78°06'37"	68.16'
77. 50.00'	68°45'19"	60.00'
78. 50.00'	84°49'06"	74.02'
79. 200.00'	02°24'08"	8.39'
80. 200.00'	23°26'23"	81.82'
81. 225.00'	14°37'38"	57.44'
82. 225.00'	44°02'22"	172.94'
83. 375.00'	13°06'12"	85.76'
84. 375.00'	08°43'48"	57.14'
85. 1575.00'	02°03'45"	56.70'
86. 1575.00'	03°48'06"	104.51'
87. 1575.00'	03°44'49"	103.00'
88. 1575.00'	04°00'06"	110.00'
89. 1575.00'	04°03'14"	111.43'

LINDAHL, BROWNING & FERRARI, INC.
Consulting Engineers, Planners & Surveyors
426 INDIANTOWN ROAD JUPITER, FLORIDA 33456 951 COLORADO AVENUE STUART, FLORIDA 33494